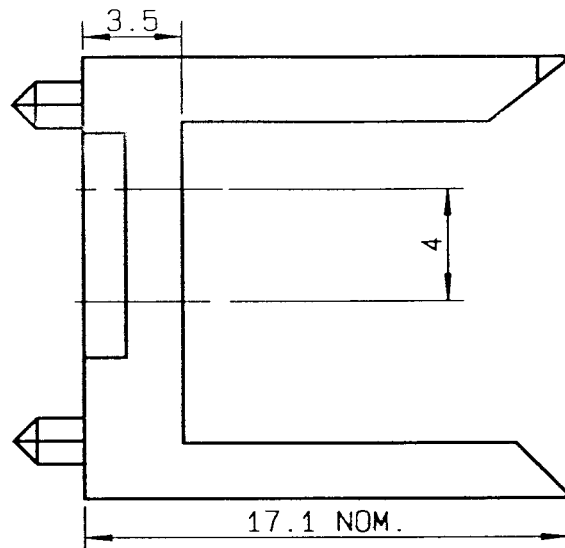
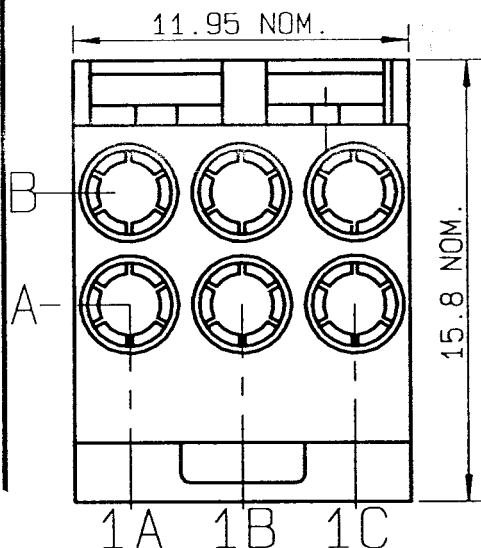


MALE HOUSING 6 WAYS WIDE BODY

R694.261.076

SERIES

MCC2



| | | |
|---------------------------------|----------|--|
| NOMINAL IMPEDANCE | NA | Ω |
| FREQUENCY RANGE | NA | GHz |
| TEMPERATURE RATING | -25/+125 | $^{\circ}\text{C}$ |
| V.S.W.R | NA + | $0 \times F(\text{GHz}) \text{Maxi}$ |
| RF INSERTION LOSS | NA | $\sqrt{F}(\text{GHz}) \text{ dB Maxi}$ |
| VOLTAGE RATING | NA | $V_{\text{eff}} \text{ Maxi}$ |
| DIELECTRIC WITHSTANDING VOLTAGE | NA | $V_{\text{eff}} \text{ Mini}$ |
| INSULATION RESISTANCE | NA | $M \Omega \text{ Mini}$ |
| HERMETIC SEAL | NA | $\text{Atm. cm}^3/\text{s}$ |
| LEAKAGE (pressurized only) | NA | |
| MECHANICAL DURABILITY | | Cycles |
| WEIGHT | 1.2 | gr |

| | |
|----------------------------|--------------|
| CABLES : | |
| OTHERS CHARACTERISTICS | |
| CABLE RETENTION | NA N Mini |
| CENTER CONTACT RETENTION | |
| Axial force - mating end | NA N Mini |
| Axial force - opposite end | NA N Mini |
| Torque | NA cm.N Mini |
| RECOMMENDED TORQUES | |
| Mating | NA cm.N |
| Panel nut | NA cm.N |
| Clamp nut | NA cm.N |

| | | | |
|------------------|------------------------|--------|---|
| CONNECTOR PARTS: | MATERIALS | FINISH | (all values are given) in micrometers |
| BODY | | | |
| OUTER CONTACT | | | |
| CENTER CONTACT | | | |
| INSULATOR | | | |
| GASKET | | | |
| OTHERS PIECES | LIQUID CRISTAL POLYMER | | |

| | | |
|---------|---------------|------------------|
| ISSUE | CREATION DATE | FILE PART-NUMBER |
| 9637B00 | 10-OCT-95 | |



The information given here is subject to change without notice. Design changes may be in order to improve the product.

Connect to the future